

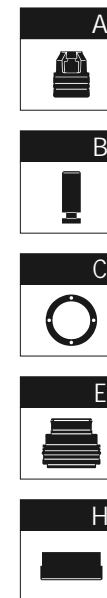
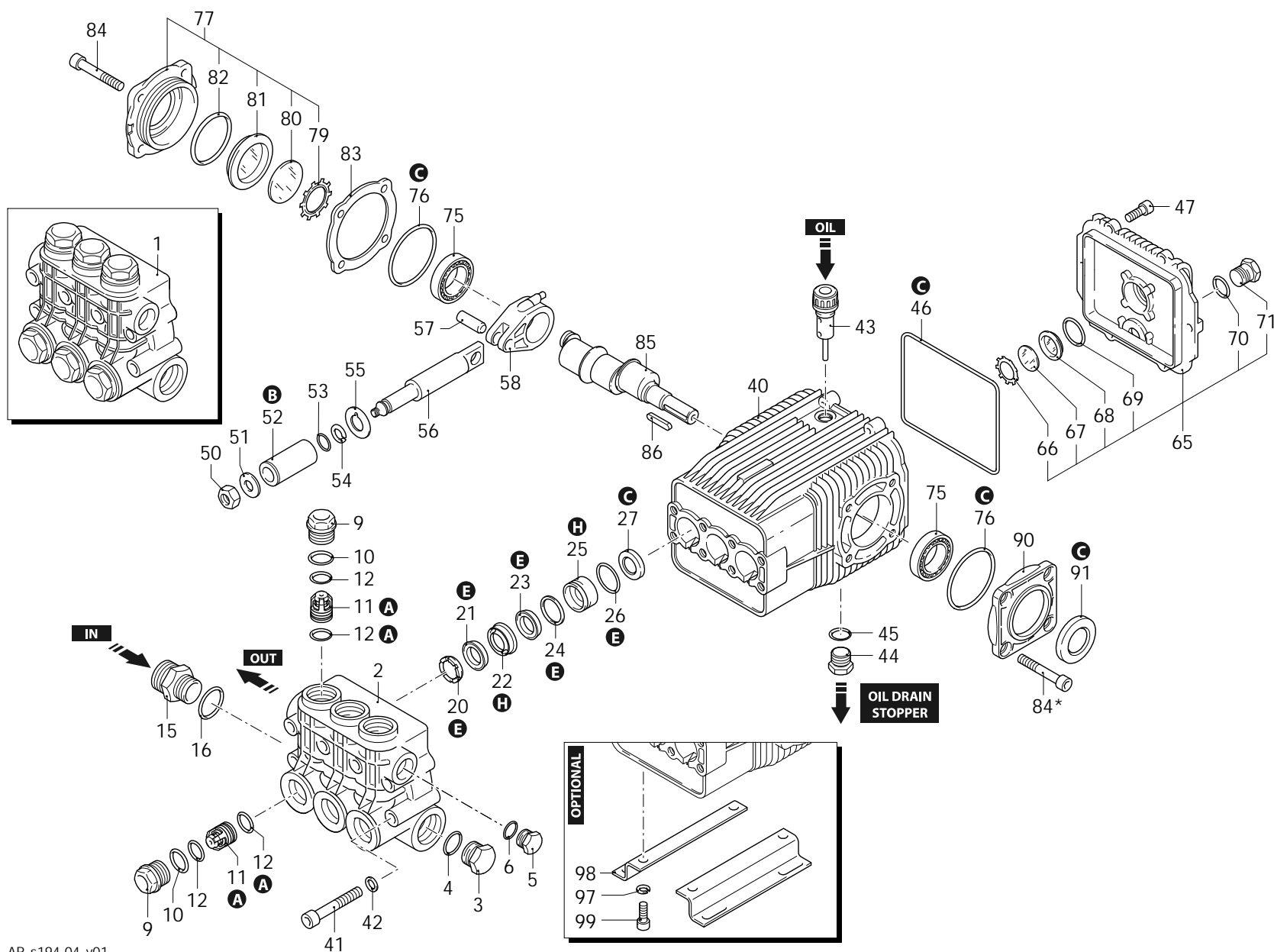


Series 194
XWL

N

1450rpm

ø 24mm



AR_s194-04_v01

29/09/2023



Series 194
XWL

N

1450rpm

Ø 24mm

P	Code	Description	Q	Note	Validity
1	1949205	Head assembly	Ø 28	1	
2	1941550	Head		1	
3	1140300	Plug	3/4" G	1 C=35Nm	
4	550350	O-ring	Ø 23,81x2,62	1	
5	1980740	Plug	3/8" G brass	1 C=20Nm	
6	740290	O-ring	Ø 14x1,78	1 Lubricate with grease Molykote PG54	
9	1940140	Plug		6	
10	1940150	Ring	anti-extrusion	6	
11	1949050	Complete valve		6	
12	1140450	O-ring	Ø 20,24x2,62	12 Lubricate with grease Molykote PG54	
15	1943270	Fitting	1" G - 3/4" G (M-M)	1	
16	550350	O-ring	Ø 23,81x2,62	1	
20	1941570	Ring	support Ø 28	3	
21	820630	Water seal	Ø 28 brown	3 Lubricate with grease Molykote PG54	
22	1140280	Piston guide	front Ø 28	3	
23	2520360	Gasket	Ø 28	3 Lubricate with grease Molykote PG54	
24	2520230	Ring	anti-extrusion	3	
25	1942260	Piston guide	rear Ø 28	3	
26	1140490	O-ring	Ø 37,82x1,78	3	
27	1940560	Ring	seal	3	
40	1941330	Pump body		1	
41	1940260	Screw	TCEI M10x80	8 C=50Nm	
42	650530	Washer		8	
43	1140370	Oil plug	with oil dipstick	1	
44	1980740	Plug	3/8" G brass	1 C=20Nm	
45	740290	O-ring	Ø 14x1,78	1 Lubricate with grease Molykote PG54	
46	1940410	O-ring	Ø 132x3	1	
47	1200430	Screw	TCEI M6x16	6 Screw with Loxeal 55-14 / C=10Nm	
50	1940570	Nut		3 Screw with Loxeal 55-14 / C=20Nm	
51	1940580	Washer		3	
52	1140190	Piston	Ø 28	3	
53	880840	O-ring	Ø 9,25x1,78	3 Lubricate with grease Molykote G807	
54	1940120	Ring	anti-extrusion	3	
55	1140160	Plate		3	
56	1940070	Piston	guide	3	
57	1940060	Pin		3	
58	1940051	Connecting-rod	aluminium	3 Lubricate with grease Molykote BR2 PLUS / C=20Nm	
65	1949010	Cover	complete	1	

P	Code	Description	Q	Note	Validity
66	1260430	Ring		1	
67	1780690	Plate		1	
68	1260250	Level gauge		1	
69	1140450	O-ring	Ø 20,24x2,62	1 Lubricate with grease Molykote PG54	
70	740290	O-ring	Ø 14x1,78	1 Lubricate with grease Molykote PG54	
71	1980740	Plug	3/8" G brass	1 C=20Nm	
75	1140410	Bearing		2	
76	1941380	O-ring	Ø 66,34x2,62	2	
77	1949011	Cover		1	
79	1941290	Ring		1	
80	1941260	Plate		1	
81	1941270	Level gauge		1	
82	100410	O-ring	Ø 34,6x2,62	1	
83	1941390	Shim 0.05mm		1	
83	1941400	Shim 0.10mm		1	
83	1941410	Shim 0.19mm		1	
83	1941420	Shim 0.25mm		1	
84	850370	Screw	TCEI M8x16	4 C=24,5Nm	
84*	850370	Screw	TCEI M8x16	4 C=24,5Nm	
85	1943280	Shaft	10 marked	1	
86	650250	Key		1	
90	1941240	Support		1	
91	820681	Ring	seal	1 Screw with Loxeal 55-14 / C=10Nm	
97	200231	Washer		4	
98	1940370	Foot		2	
99	1940380	Screw	TCEI 10x18	4 C=50Nm	
A	2780	Valve kit		1	
B	1849	Piston kit	Ø 28	1	
C	2873	Oil seal kit		1	
E	42708	Water seal kit	Ø 28	1	
H	42707	Piston guide kit	Ø 28	1	

Revision: 1

Oil type: SAE 15W40

Attachment:

Date: 29/09/2023

Oil quantity: 0,870 Kg

C= Tightening torque (Tolerance +0 ÷ -10%)

** = Not present for electric pump*